



# PAST TIMES

Volume 2, Issue 1

Spring 2000

## **ABOUT OUR MAILING LIST**

Misspelled name?  
Wrong address? Duplicate mailings? Call 425/392-3500 or e-mail [info@issaquahhistory.org](mailto:info@issaquahhistory.org) and we'll correct it.

If you no longer wish to receive this newsletter, contact us and we'll remove you from our list.

If you are a member, your expiration date appears on the mailing label. Renewing on time—or early—means we don't have to send you a reminder. Help us save time and postage costs!

## **INSIDE**

<i>President's Address</i>	2
<i>David J. Horrocks Research Center</i>	2
<i>News Notes</i>	2
<i>Historical Society Gets New Logo</i>	3
<i>April Membership Program</i>	4

## History Mysteries

Every week the museum receives telephone and e-mail inquiries about the history of Issaquah and surrounding communities. Simple answers can usually be found in text references. More often, the most detailed (and interesting!) answers can be found by asking members of the IHS. Here are some recently solved mysteries...

### **Where is the Castro Cabin? And is it Castro or Casto?**

Both "Casto" and "Castro" have been used when telling the story of these early Squak Valley settlers. The original survey refers to the Casto cabin, as does Clarence Bagley, author of History of King County (published in 1929), so perhaps local historians can agree on "Casto." The Casto cabin, whose inhabitants were killed in 1864 during a conflict with area Native Americans, stood just east of Pickering Barn. (For more information, refer to Bagley, 663-665, or search for "Casto" on our web site, [www.issaquahhistory.org](http://www.issaquahhistory.org)).

### **Where was Renton Junction?**

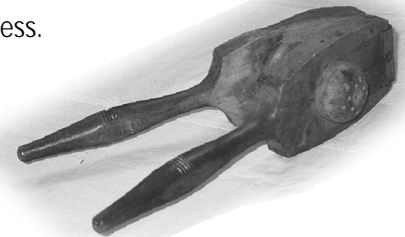
Renton Junction was a Seattle Interurban Trolley stop. One source told us the stop was ten miles south of Seattle on the line; another reported that it was located near what is now South-center, by the present-day Carco theater. Another member sent us a scanned picture of the station, which we placed in our research files.

### **What the heck is this thing?**



This item (object ID number 94.17.6, on exhibit in the kitchen of the Gilman Town Hall Museum) has perplexed many a museum visitor and volunteer. Constructed of wood with a sturdy hinge, it looks like it could be a lemon juicer. However, if you placed a lemon half over the rounded side, the juicing holes would press against the outer peel of the lemon.

What else could it be? Nut cracker? Garlic press? None of these answers seemed right either. Finally someone solved the mystery – it is indeed a lemon press. Instead of pressing a lemon half, users of this press squeezed a lemon slice in the press.

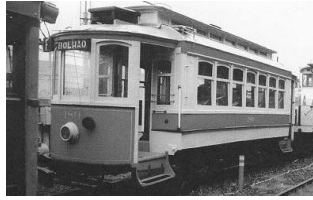


### **Join the History List!**

If you have an e-mail address and an interest in the history of Issaquah, join History List! You can post, read, or answer other history mysteries. Send e-mail to [info@issaquahhistory.org](mailto:info@issaquahhistory.org) asking to be placed on the History List.

## President's Corner

by David Bangs



**A**s you have certainly heard by now, the Issaquah Historical Society is spearheading an effort to bring an historic trolley to Issaquah! While we have never had an actual trolley before, rail transportation was our area's lifeline for many years, starting with the opening of the depot in 1889. Freight trains served Issaquah until just a few years ago.

The route into town by train was beautiful. The tracks *still* wend a scenic path from Gilman Village and the Visitor's Center to our depot downtown, and the railroad crossings north of Gilman Boulevard to the boat launch are still in place. This is an incredible asset for a community struggling to preserve and enhance its historic charm in the face of rapid growth.

Restoring our depot and keeping the rail this long has been a stunning community achievement! Preserving it for the long haul requires that we put it to use for the benefit of all. A working trolley could be the "glue" that brings Issaquah's assets together to make it more of a regional recreational destination, and could serve as the first step toward a larger rail project that would make a big impact on transportation.

Our trolley committee represents a cross-section of community interests. We have enjoyed wonderful cooperation from the City and groups like Main Street Issaquah, the Chamber of Commerce, the Village Theater and the Pomegranate Center.

We are making good progress, and have set an aggressive goal of serving the masses during Salmon Days 2000. Achieving our goal this year will require focus and energy. Please join me in supporting this project!

*David*

More information about the trolley is available on our web site at [www.issaquahhistory.org](http://www.issaquahhistory.org). We'll also keep you posted at meetings and in later newsletters.

## The David J. Horrocks Research Center

**I**n the last issue of *Past Times*, we announced that a memorial fund had been created in the name of David J. Horrocks. This fund will be used to establish a formal research center at the Gilman Town Hall. As of this writing, we have installed a second computer and networked it to our main collections database. Community members will be able to use the computer to peruse our object and photo collections. Volunteers are also re-organizing and indexing our research files and library. We will also install user-friendly genealogy software in order to create an Issaquah family tree of current residents and early settlers.

You can still contribute to the David J. Horrocks Memorial Fund! Send your donations to: Issaquah Historical Society, P.O. 695, Issaquah, WA 98027

## News Notes

We regret to inform you of the passing of **HELEN MILLER**, descendent of Lyman B. Andrews. Helen generously donated several pieces of family furniture to the IHS. They currently make up the Andrews room at the Gilman Town Hall Museum.



Meet **2000.1.1**, the first artifact of the new Millennium. This little china dog was found under the Depot during restoration. He was accessioned on January 15.

Do you have something newsworthy that you would like included in the next issue of *Past Times*? Call 425/392-3500, or send us e-mail at [info@issaquahhistory.org](mailto:info@issaquahhistory.org).

# Historical Society Gets a New Logo

If you've received mail from the IHS lately, you've probably noticed that we're sporting a new look. The Issaquah Historical Society has a new logo. Shown here, the logo depicts the Gilman Town Hall, the historic train depot, and the distinctive IOOF Hall. Behind these buildings are three peaks meant to represent the defining geological formations of our community: Cougar, Squak, and Tiger mountains. The color version (which you can view on our web page—[www.issaquahhistory.org](http://www.issaquahhistory.org)) of the logo is deep green and brick red.

These colors are in-

tended to evoke the original hues of the Northern Pacific Railway.

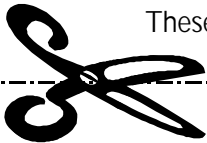
The original Issaquah Historical Society logo featured a stylized image of the Gilman Town Hall, with Squak



Mountain in the background. Although quaint and cheerful, the old logo left out railroad imagery and many other aspects of the town's history. Since the original logo was designed, IHS has grown and

now comprises a number of projects and facilities in addition to the Gilman Town Hall.

Our new logo was created by local graphics firm Graphic Technologies in collaboration with the IHS board. Board members and Graphic Technologies staff first met in October of 1999 for a brainstorming session. The group agreed that they wanted the logo to capture both the nostalgia and the community spirit of Issaquah. This was the final design. Many thanks to the historical society members and volunteers who "test drove" the logo and gave us their feedback!



## Membership Renewal & Application Form

**Yes, I want to support the work of the Issaquah Historical Society!**

- Individual (\$20)    Senior/Student (\$10)    Family (\$25)    Senior Family (\$15)    Corporate (\$50)

Other Membership levels:

- Contributing Member (\$50)    Supporting Member (\$100)    Benefactor (\$500)  
 Contributing Corporate (\$75)    Supporting Corporate (\$150)    Corporate Benefactor (\$750)  
 I am donating \$\_\_\_\_\_ in support of your work.

Name: \_\_\_\_\_

Address: \_\_\_\_\_

City: \_\_\_\_\_ State: \_\_\_\_\_ Zip: \_\_\_\_\_

Home Phone: \_\_\_\_\_ Work Phone: \_\_\_\_\_

E-mail: \_\_\_\_\_

My employer will match my gift! Company: \_\_\_\_\_

(Please attach matching gift form or provide contact name and phone number for the matching gift officer at your company).

Please charge my membership fee to my Visa/MasterCard.

Visa/MasterCard #: \_\_\_\_\_ Exp.: \_\_\_\_\_

Name as it appears on credit card: \_\_\_\_\_

Please make checks payable to the Issaquah Historical Society (IHS). The Issaquah Historical Society is a non profit 501(c)(3) organization, tax ID #23-7425589. All gifts are tax-deductible as allowed by law.

P.O. Box 695 · Issaquah, WA 98027 · 425/392-3500 · [info@issaquahhistory.org](mailto:info@issaquahhistory.org) · <http://issaquahhistory.org>

## April Membership Program

**A**t IHS's April membership meeting, telegrapher Frank O. Remington will be on hand to speak about the history of the telegraph and how it influenced the railroad. He will also display and demonstrate some items from his collection of historic telegraph equipment. As always, there will be free refreshments. Members and new-comers alike are welcome!

Tuesday April 11 at 7 PM  
Historic Railroad Depot

### OTHER UPCOMING EVENTS...

Just for Fun Fair: Saturday, April 1, 10:30 AM—3:30 PM

(held at the Issaquah Community Center)

June Membership Meeting: Tuesday, June 13, 7 PM

(Historic Railroad Depot)

Pioneer Reunion: Sunday, June 25, 10 AM—3 PM

(Historic Railroad Depot)

*Past Times* is a production of the Issaquah Historical Society. More than 225 members strong, the Issaquah Historical Society works to preserve and interpret the history of Issaquah and the surrounding area.

Historic Train Depot  
50 Rainier Blvd. N  
Open Saturdays, 11-3

Gilman Town Hall  
165 SE Andrews Street  
Open Thursdays & Saturdays, 11-3  
and by appointment.

Outdoor Logging Display  
In the 100 block of Rainier Boulevard S

---

**WE'RE ON THE WEB!**  
**[WWW.ISSAQUAHHISTORY.ORG](http://WWW.ISSAQUAHHISTORY.ORG)**

---



P.O. Box 695  
Issaquah, WA 98027

NON-PROFIT ORG.  
U.S. POSTAGE  
**PAID**  
PERMIT #374  
ISSAQUAH, WA

**NEXT MEMBERSHIP PROGRAM:  
TELEGRAPHY  
APRIL 11, 7 PM**